

AUTOMOTIVE PLUMBING

Tube - Fittings - Tools

BrakeQuip[®]
////// INNOVATIVE SOLUTIONS FOR AUTOMOTIVE TUBES AND HOSES
Since 1998 brakequip.com

BrakeQuip

Automotive Plumbing Catalog

Copyright © 2020-2021 BrakeQuip

Published August 2020

TUBING & HARDWARE

Tubing		Hardware	
EziBend 2	4	Tube Nuts	12
316L Stainless Steel	5	Elbows	14
Hose & Protectors		Braze-on Fittings	14
Hose	6	Pre-Fluxed Brazing Rods	14
Tube Protectors	6	Female Unions	15
Tubing Tools		Male Unions	16
Straighteners	7	Bulkhead Nuts	16
Benders	8	Tees	17
Flaring Tools	9	Clips & Brackets	18
Cutters	10	Thread Adapters	19
Line Stoppers	10	Bump Tube Adapters	21
Tool Kits	11	Transmission Line Adapters	21
		Copper Washers	22
		Banjo Bolts	22
		Banjo Adapters	23
		Braze-on Banjo Heads	23
		Bleed Screws	24
		Brake Hose Caps & Plugs	24
		Assortment Kits	25

COPPER-NICKEL



For the ultimate combination of corrosion resistance and ease of use, choose **EziBend 2** cunifer tubing. EziBend meets SAE J1650, copper-nickel material standards, and is specially alloyed for automotive use.

TOUGH ON CORROSION

Unlike other similarly-priced tubing that attempts to protect rust-prone steel with plating or coating, EziBend tubing is rust and corrosion proof. It will remain protected after tube formation.

EASY ON TOOLS

EziBend's composition is inherently ductile, making it strong yet easy to work with. The same properties that make EziBend simple to shape allow it to achieve a superior sealing surface against fittings.

EZIBEND 2

Outer Diameter	Coil Length	Part Number
3/16"	25 ft	T187-25SE
3/16"	100 ft	T187-100SE
1/4"	25 ft	T250-25SE
1/4"	100 ft	T250-100SE
5/16"	25 ft	T312-25SE
3/8"	25 ft	T375-25SE



EziBend 2, 3/16"
T187-25SE

Call about branding.

STAINLESS STEEL

Renowned for its ease of use and stunning appearance, 316L stainless is the top choice of premiere automotive builders.

MARINE-GRADE 316L

Marine-grade stainless steel tubing has a high-level of corrosion protection. 316L contains molybdenum, a corrosion resistor that is not found in 304 stainless.

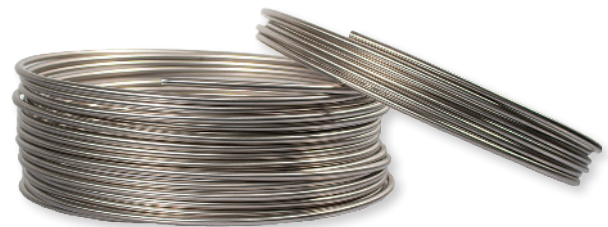
IDEAL FOR BUILDERS

Our .028" wall thickness and annealing process make it the builder's choice for stainless installations. Straightening, cutting, bending, and flaring is easier than with non-annealed stainless.



316L STAINLESS STEEL

Outer Diameter	Coil Length	Part Number
3/16"	25 ft	T187-25SS
3/16"	100 ft	T187-100SS
1/4"	25 ft	T250-25SS
1/4"	100 ft	T250-100SS
5/16"	25 ft	T312-25SS
5/16"	25 ft	T312-25SS
3/8"	25 ft	T375-25SS



316L Stainless Steel, 5/16"
T312-25SS

TOTAL CUSTOMIZATION

BrakeQuip can customize OD, wall thickness, or coil length for large volume special orders.

For more information, contact sales@brakequip.com.

HOSE & PROTECTORS

HOSE

Remote Reservoir Hose

Available in 10ft sections.

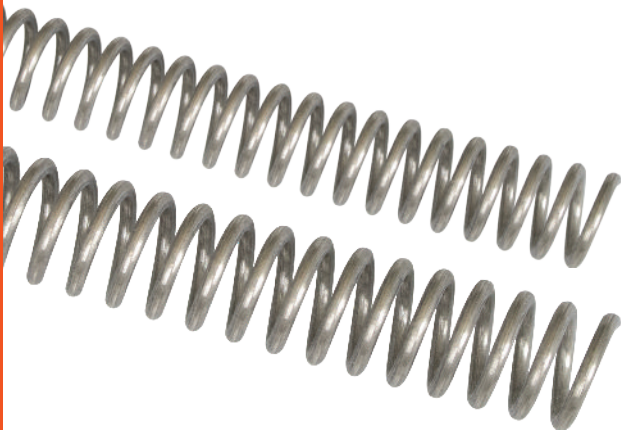


Inner Diameter	Outer Diameter	Part Number
1/4"	7/16"	BQ320
5/16"	1/2"	BQ321
3/8"	9/16"	BQ322

1/4" Remote Reservoir Hose
BQ320

TUBE PROTECTORS

Spring Guard



Inner Diameter	Length	Material	Part Number
3/16"	3ft	Stainless steel	BQ231
1/4"	3ft	Stainless steel	BQ232

Spring Guards
BQ231, BQ232

TUBING TOOLS

STRAIGHTENERS

Professional Tube Straightener

BQ1028

Complete a professional tube installation by forming coiled tube into straight sections of any length. Adjust the wheels to the tube size and pull the tube through the tool to straighten.

- For 3/16" – 1/2" light-walled, annealed tube
- Non-marking delrin wheels
- 5-point precision and fine-threaded adjustment
- Vice mount or bolt straight to the workbench



Replacement wheel
BQ1028-75

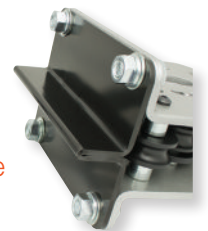


Brake Tube Straightener

BQ1030

Designed for the automotive DIY-er. Straightens coils with common brake line sizes.

- Straighten 3/16" – 1/4" annealed tubing
- U-shaped rollers straighten both tubing sizes
- Hard polymer rollers leave a smooth finish on tubing
- Smooth ball bearing action
- Bench-mount ready
- Optional vise-mount base (BQ1030-MB)



Vise-mount base
BQ1030-MB

Tube-Straightening Pliers

BQ405

Remove imperfections or fix mistakes with these pliers.

- Straightens incorrect bends in 3/16" and 1/4" tube
- Makes tight-radius bends, up to 90°, for both 3/16" and 1/4" tube
- The flat side of the mandrel provides a guide surface for cutting



HOSE & PROTECTORS *CONTINUED*

BENDERS

Brake Tube Pliers

BQ402

For use on 3/16" and 1/4" brake tube, these pliers are perfect for working in constrained areas under a vehicle.

- Align the tube and nut with the port during installation
- Put a tight 90° bend behind a tube nut (such as a master cylinder drop)



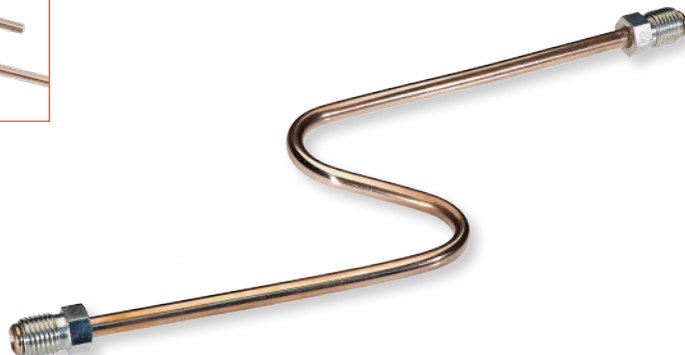
One side of the tool end is flat to facilitate cutting.

Professional Tube Bender

BQ406

For use on 3/16" and 1/4" brake tube, this bender is easy to use and yields professional results. Bend on the vehicle or mount the tool in a vise for precision mass production.

- Bends in a tight radius, up to 180°
- Low-friction rollers make for easy precision work
- Smooth roller channels provide a clean, scratch-free finish
- Handles separate for quick and easy tube removal

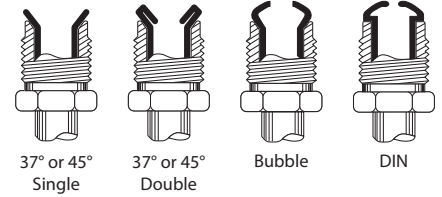


HOSE & PROTECTORS CONTINUED

FLARING TOOLS

These flaring tools are designed to be used in a bench vise or with our table flange mount (BQ350-1).

- Smooth channel dies minimize tube scarring and deformation for a show-quality finish.
- The cam-and-lever design, combined with ball detent turrets, provide fast and easy single, double, bubble, and DIN flares.
- Replacement components are available.



Mounting Flange
BQ350-1

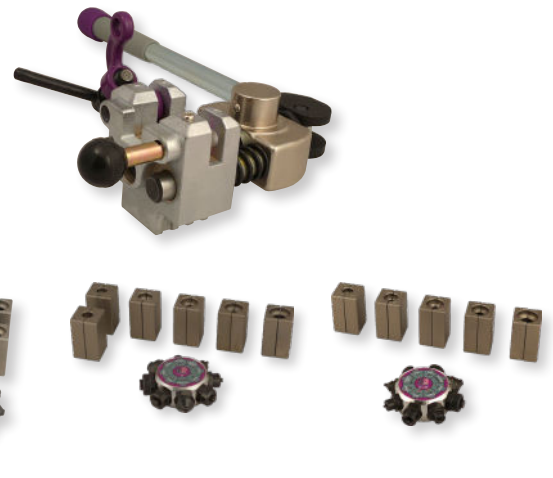


"A" Series

45° flares	3/16", 1/4", 5/16", 3/8" 4.75mm, 6mm, 8mm, 10mm
37° flares	3/16", 1/4", 5/16", 3/8", 1/2"
DIN flares	3/16", 1/4"
Part Number	BQ350A

"A" Series Features:

- Die-cast steel body
- Extra-long handle
- Tube-setting tab
- Die-clamp bolt
- Mounting flange



Standard Series

3/16", 1/4", 5/16", 3/8", 1/2" 4.75mm, 6mm, 8mm, 10mm	3/16", 1/4", 5/16" 3/8", 1/2"	—
3/16", 1/4", 5/16", 3/8", 1/2"	—	3/16", 1/4", 5/16" 3/8", 1/2"
3/16", 1/4"	3/16"	—
Part Number	BQ351	BQ352

37° Turret and Dies
for BrakeQuip flaring tool
BQ352-BQ



37° Turret and Dies
for Sykes Pickavant 270
BQ352-SP



HOSE & PROTECTORS CONTINUED

CUTTERS

These tube cutters have a heavy-duty wheel to cut 3/16" to 5/8" stainless steel or other light-walled tubing.

Professional Tube Cutter

BQ602



Replacement blade
BQ602C

Mini Tube Cutter

BQ601



LINE STOPPERS

Line Stopper Kits prevent leaks and contamination during service.

4-Piece Stopper Kit

BQ407

The 5/16" stopper in the 4-Piece Stopper Kit is also suitable for 3/16" and 1/4" lines.



Stopper Size	4-Piece Qty	8-Piece Qty
3/16"-1/4"	—	2
5/16"	1	2
3/8"	1	1
1/2"	1	1
Banjo	1	2

8-Piece Stopper Kit

BQ408



BQ408 comes in slide-lock clamshell case.

HOSE & PROTECTORS CONTINUED

TOOL KITS

Thread Identification Kit BQ2100

The Thread Identification Kit has gauges for the vast majority of brake plumbing threads, both male and female. Gauges are color-coded for fast selection. The threads are hardened for long life. The gauges can also be used to block-off fluid ports during service.



Imperial Sizes	Metric Sizes
3/8-20 BSF	M9 x 1
3/8-24 UNF	M10 x 1
7/16-20 UNF	M10 x 1.25
7/16-24 UNS	M10 x 1.5
1/2-20 UNF	M11 x 1.25
9/16-18 UNF	M12 x 1
9/16-20 UNS	M12 x 1.25
	M12 x 1.5
	M14 x 1.5

Bleeder Buster Kit BQ2200

Use this kit to remove and replace frozen bleeder screws. All kit components are available individually as replacement parts.



Kit includes:

Part Number	Qty
BQ2200-1	1
BQ2200W	1
BQ315	10
BQ316	10
BQ4433	4
BQ4434	4
BQ4435	4
BQ4438	4
BQ4439	4
BQ4440	4
BQ4441	4
BQ4442	4
BQ4443	4
BQ4444	4
BQ4445	4
BQ4446	4



Bleed Screw Removal Tool
BQ2200-1



Filler Wire Replenishment Kit
BQ2200W

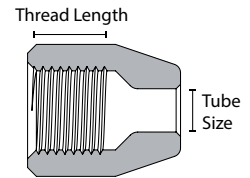
/// Full list of bleed screws and caps are on page 24.

HARDWARE

TUBE NUTS

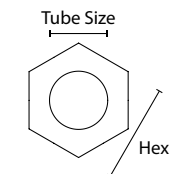
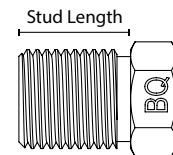
Female Imperial

Thread	Tube Size	Thread Length	Seat	Hex	Part Number
3/8-24 UNF	3/16"	7.5mm	37°	7/16"	BQ55
3/8-24 UNF	3/16"	5.6mm	45°	7/16"	BQ9176
7/16-20 UNF	1/4"	5.8mm	37°	9/16"	BQ57
1/2-20 UNF	5/16"	10mm	45°	5/8"	BQ9177
9/16-18 UNF	3/8"	7.5mm	37°	11/16"	BQ9201
9/16-18 UNF	3/8"	8.6mm	45°	11/16"	BQ9239
9/16-18 UNF	3/8"	6.1mm	o-ring pilot	5/8"	BQ9207
5/8-18 UNF	3/8"	8.6mm	45°	13/16"	BQ9219



Male Imperial

Thread	Tube Size	Stud Length	Flare	Hex	Part Number
3/8-20 BSF	3/16"	14mm	45°	3/8"	BQ4276
3/8-24 UNF	3/16"	9.1mm	45°	3/8"	BQ5555
3/8-24 UNF	3/16"	9.1mm	45°	3/8"	BQ5555B <i>brass</i>
3/8-24 UNF	3/16"	9.1mm	45°	3/8"	BQ5555SS <i>stainless</i>
3/8-24 UNF	3/16"	17mm	45°	3/8"	BQ4285
7/16-20 UNF	3/16"	17.5mm	45°	11mm	BQ6118
7/16-20 UNF	1/4"	18mm	45°	7/16"	BQ4277
7/16-24 UNS	3/16"	9.1mm	45°	11mm	BQ5842
7/16-24 UNS	3/16"	9.1mm	45°	11mm	BQ5842SS <i>stainless</i>
7/16-24 UNS	1/4"	12.5mm	45°	7/16"	BQ2577
7/16-24 UNS	1/4"	12.5mm	45°	7/16"	BQ2577SS <i>stainless</i>
1/2-20 UNF	3/16"	10.2mm	45°	1/2"	BQ9184
1/2-20 UNF	1/4"	14mm	45°	1/2"	BQ9187
1/2-20 UNF	5/16"	10.2mm	45°	1/2"	BQ2578
9/16-18 UNF	3/16"	14mm	45°	9/16"	BQ9185
9/16-18 UNF	1/4"	14mm	45°	9/16"	BQ9186
5/8-18 UNF	3/8"	10.2mm	45°	5/8"	BQ9181

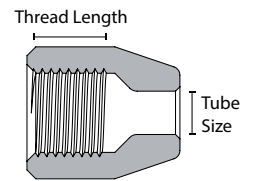


/// Copper Seat Seal (Flare Gasket) is on page 22.
 /// Imperial Tube Nuts Assortment Kit, BQ7006, is on page 26.

HARDWARE CONTINUED

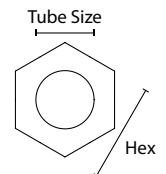
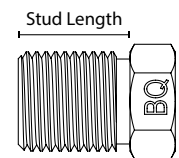
Female Metric

Thread	Tube Size	Thread Length	Seat	Hex	Part Number
M10×1	3/16"	9mm	45°	13mm	BQ9175
M12×1	3/16"	9mm	45°	16mm	BQ9174
M12×1	1/4"	9mm	45°	16mm	BQ9179
M12×1.25	1/4"	8mm	45°	16mm	BQ9156
M12×1.5	1/4"	9mm	45°	16mm	BQ9178
M14×1.5	10mm	10.9mm	37°	17mm	BQ9208
M16×1.5	10mm	10.9mm	37°	19mm	BQ9209
M16×1.5	3/8"	11mm	45°	19mm	BQ9226
M18×1.5	12mm	14.4mm	37°	21mm	BQ9210



Male Metric

Thread	Tube Size	Stud Length	Flare	Hex	Part Number
M9×1	3/16"	14mm	45°	10mm	BQ4510
M10×1	3/16"	11.6mm	45°	11mm	BQ4511
M10×1	3/16"	11.6mm	45°	11mm	BQ4511SS <i>stainless</i>
M10×1	3/16"	14mm	45°	11mm	BQ4511LT <i>long thread</i>
M10×1	3/16"	12.6mm	DIN	11mm	BQ72
M10×1.25	3/16"	11.6mm	45°	11mm	BQ4512
M10×1.5	3/16"	11.6mm	45°	11mm	BQ9188
M11×1	3/16"	15mm	45°	11mm	BQ9189
M11×1.25	3/16"	15mm	45°	11mm	BQ9190
M11×1.5	3/16"	13.1mm	45°	13mm	BQ9191
M12×1	3/16"	11.6mm	45°	13mm	BQ9180
M12×1	1/4"	11.6mm	45°	13mm	BQ4513
M12×1	1/4"	11.6mm	45°	12mm	BQ4513SS <i>stainless</i>
M12×1	1/4"	14.6mm	45°	13mm	BQ4513LT <i>long thread</i>
M12×1	1/4"	14.9mm	DIN	13mm	BQ9169
M12×1.25	3/16"	11.6mm	45°	13mm	BQ9192
M12×1.25	1/4"	11.6mm	45°	13mm	BQ9157
M12×1.5	3/16"	11.6mm	45°	13mm	BQ9193
M12×1.5	1/4"	11.6mm	45°	13mm	BQ9182
M13×1	3/16"	15mm	45°	13mm	BQ9194
M13×1.25	3/16"	15mm	45°	13mm	BQ9195
M13×1.5	3/16"	15mm	45°	13mm	BQ9196
M14×1.5	1/4"	11.6mm	45°	15mm	BQ9183
M14×1.5	5/16"	11.6mm	45°	15mm	BQ9197
M14×1.5	5/16"	15mm	DIN	16mm	BQ9149
M16×1.5	5/16"	11.6mm	45°	17mm	BQ9198
M16×1.5	3/8"	16mm	45°	17mm	BQ9166
M16×1.5	10mm	13.2mm	DIN	16mm	BQ9148
M18×1.5	5/16"	16mm	45°	18mm	BQ9199



/// Metric Tube Nuts Assortment Kit, BQ7005, is on page 26.

HARDWARE CONTINUED

ELBOWS

90° Swivel Elbow

BQ141

Port thread 3/8-24 UNF, inverted
 Tube nut 3/8-24 UNF

Zinc-nickel BQ141Z

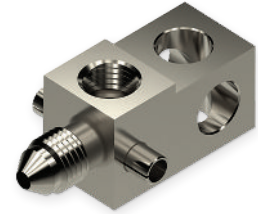
BQ141 is useful in tight spots that require an inverted seat connection.



JIC Elbow

BQ252

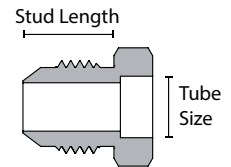
Port thread 3/8-24 UNF, inverted
 Stud thread 3/8-24 UNF
 Dash size -03 JIC



BRAZE-ON FITTINGS

Aluminum

Thread	Tube Size	Stud Length	Type	Hex	Part Number
9/16-18 UNF	3/8"	14.1 mm	-06 JIC	5/8"	BQ170
5/8-18 UNF	3/8"	15.7 mm	45°	11/16"	BQ171
3/4-16 UNF	1/2"	16.7 mm	-08 JIC	13/16"	BQ172
7/8-14 UNF	5/8"	22.6 mm	-10 JIC	15/16"	BQ173
1 1/16-14 UNS	3/4"	25.4 mm	45°	1 1/16"	BQ174



Steel

Thread	Tube Size	Stud Length	Type	Hex	Part Number
3/8-24 UNF	3/16"	12.2mm	-03 JIC	7/16"	BQ153
9/16-18 UNF	3/8"	14.1 mm	-06 JIC	5/8"	BQ226
9/16-18 UNF	1/2"	14.1 mm	-06 JIC	11/16"	BQ228
9/16-18 UNF	10mm	14.1 mm	-06 JIC	5/8"	BQ227



PRE-FLUXED BRAZING RODS

Silver

BQ33

For professional brazing of steel, stainless, brass, or any combination of these metals. Designed for brazing high-pressure fittings. No cadmium. 18" long.



pack of 8

Aluminum

BQ34

For brazing aluminum. 18" long.



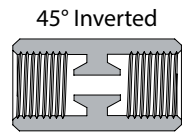
pack of 5

HARDWARE CONTINUED

FEMALE UNIONS

Imperial

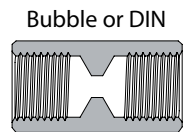
Thread	Seat	Hex	Overall Length	Part Number
3/8-24 UNF	45°	1/2"	22.2mm	BQ110
3/8-24 UNF	45°	1/2"	22.2mm	BQ110B <i>brass</i>
3/8-24 UNF	bubble	1/2"	25mm	BQ115
7/16-24 UNS	45°	9/16"	22.2mm	BQ111
7/16-24 UNS	45°	9/16"	22.2mm	BQ111SS <i>stainless</i>
1/2-20 UNF	45°	5/8"	25mm	BQ112
9/16-18 UNF	45°	3/4"	27mm	BQ119
5/8-18 UNF	45°	3/4"	27mm	BQ113



45° Inverted

Metric

Thread	Seat	Hex	Overall Length	Part Number
M10×1	45°	13mm	24mm	BQ117
M10×1	DIN	13mm	25mm	BQ114
M12×1	45°	16mm	25mm	BQ116
M12×1	DIN	16mm	27mm	BQ147

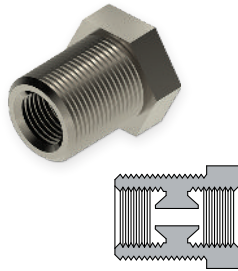


Bubble or DIN

Bulkhead Union

BQ148

Thread	7/16-24 UNS (2)
Seat type	45° inverted
Mount thread	5/8-18 UNF
Hex	19mm



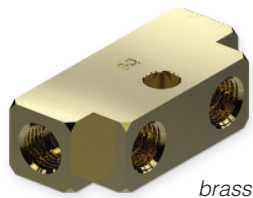
Secure with BQ13 bulkhead nut.

/// Female Unions Assortment Kit, BQ7009, is on page 26.

Tandem Trailer Fittings

BQ4700B

Thread	3/8-24 UNF (4)
Seat type	inverted

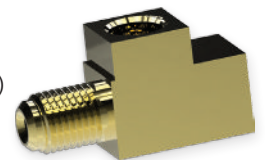


brass

Block off excess ports with BQ503 plug.

BQ4705B

Threads	3/8-24 UNF ports (2)
	3/8-24 UNF stud
Seat type	inverted



brass

Block off excess ports with BQ503 plug.

HARDWARE CONTINUED

MALE UNIONS

BQ195

Thread	3/8-24 UNF studs (2)
Seat type	inverted
Hex	1/2"
Stud length	16 mm
Overall length	44 mm



BQ292

Thread	3/8-24 UNF studs (2)
Dash size	-03 JIC
Hex	7/16"
Stud length	12.2 mm
Overall length	30.7 mm



Stainless BQ292SS

BQ293SS

Thread	3/8-24 UNF studs (2)
Dash size	-03 JIC
Hex	7/16"
Stud length	12.2 mm
Overall length	45.9 mm



stainless

Use with BQ78 nut.

BULKHEAD NUTS

Imperial

Thread	Hex Size	Thickness	Part Number
3/8-24 UNF	1/2"	5 mm	BQ78
7/16-20 UNF	5/8"	6 mm	BQ80
1/2-20 UNF	3/4"	6 mm	BQ83
5/8-18 UNF	15/16"	8 mm	BQ13
11/16-18 UNS	1"	8 mm	BQ77
3/4-16 UNF	1 1/16"	8 mm	BQ84
7/8-14 UNF	1 1/8"	8 mm	BQ75
7/8-18 UNS	1 1/8"	8 mm	BQ89



Metric

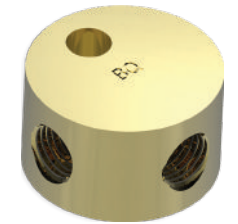
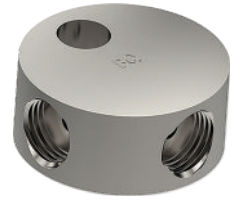
Thread	Hex Size	Thickness	Part Number
M10×1	13 mm	5 mm	BQ79
M12×1	19 mm	6 mm	BQ81
M12×1.5	19 mm	6 mm	BQ82
M16×1.5	22 mm	7 mm	BQ87
M18×1.5	25 mm	8 mm	BQ86
M20×1.5	27 mm	8 mm	BQ85

HARDWARE *CONTINUED*

TEES

Female Imperial

Thread	Seat	Diameter	Mount	Mount Hole	Thickness	Part Number
1/8-27 NPT	NPT	31.75mm	Bolt	8.2mm	14mm	BQ93A
3/8-24 UNF	45°	T-shape	none	none	1/2"	BQ264
3/8-24 UNF	45°	31.75mm	Bolt	8.2mm	1/2"	BQ90A
3/8-24 UNF	45°	28.6mm	Bolt	8.2mm	1/2"	BQ56A
3/8-24 UNF	45°	28.6mm	Bolt	8.2mm	1/2"	BQ56AB <i>brass</i>
3/8-24 UNF	45°	28.6mm	Bolt	8.2mm	1/2"	BQ56ASS <i>stainless</i>
7/16-20 UNF	bubble	31.75mm	Bolt	8.2mm	14mm	BQ94A
7/16-24 UNS	45°	31.75mm	Bolt	8.2mm	14mm	BQ92A



Female Metric

Thread	Seat	Diameter	Mount	Mount Hole	Thickness	Part Number
M10×1	45°	31.75mm	Bolt	8.2mm	1/2"	BQ91A
M10×1	DIN	31.75mm	Bolt	7.2mm	14mm	BQ95A

Male Imperial

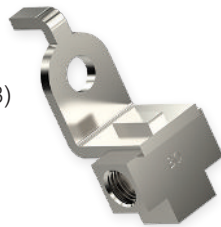
Thread	Dash Size	Diameter	Mount	Mount Hole	Thickness	Part Number
3/8-24 UNF	-03 JIC	31.75mm	Bolt	8.2mm	1/2"	BQ360
7/16-20 UNF	-04 JIC	31.75mm	Bolt	8.2mm	1/2"	BQ361



Tees with Bracket

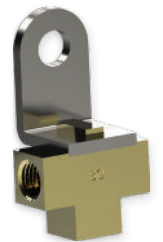
BQ7812

Thread	3/8-24 UNF ports (3)
Seat type	inverted
Mount hole size	8.5mm
Brass	BQ7813B



BQ7813B

Thread	3/8-24 UNF ports (3)
Seat type	inverted
Mount hole size	8.8mm
Steel	BQ7812



brass

Double Bolt Tee

BQ177SS

Thread	3/8-24 UNF ports (3)
Seat type	inverted
Diameter	47mm
Thickness	1/2"
Mount hole size	8.5mm

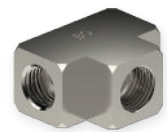
*stainless
for Harley*



NPT Tee

BQ265

Threads	3/8-24 UNF ports (2) 1/8-27 NPT port (middle)
Seat type	inverted (2)



HARDWARE CONTINUED

CLIPS & BRACKETS

Universal Clip
BQ3052



Universal Clip
BQ3052SS



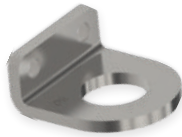
Clip - Toyota
BQ3053



Universal Brackets

BQB06

Hole size 19mm
Mount holes 5mm



BQB244

Hole size 17mm
Mount holes 6.8mm



Bracket Retaining Screws
BQ71

pack of 50



Self-Drilling Screws
BQ811

pack of 20



Tube Clamps

Tube size	Part Number
3/16"	BQ249
1/4"	BQ250
5/16"	FL35
3/8"	FL34

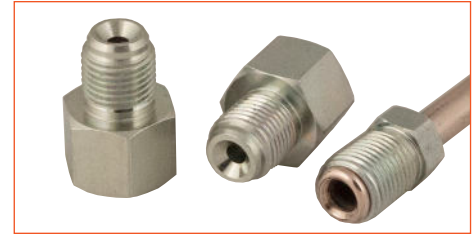
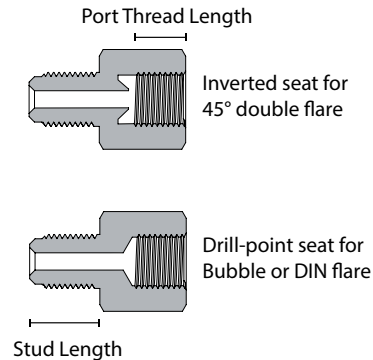


plastic

HARDWARE CONTINUED

THREAD ADAPTERS

Male-Female



When deciding if an adapter will work with a specific port, think of the Stud Fit as a "tube-size equivalent," in that the adapter will seat properly if the corresponding tube and tube nut would also seat properly.

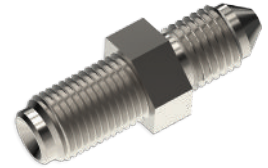
Port Thread	Stud Thread	Port Seat	Tube Size	Stud Length	Stud Fit	Hex	Part Number
1/8-27 NPT	3/8-24 UNF	NPT	-	11.2mm	-	9/16"	BQ247
1/8-27 NPT	1/2-20 UNF	NPT	-	11 mm	-	9/16"	BQ248
1/8-27 NPT	M10×1.5	NPT	-	11 mm	-	9/16"	BQ187
3/8-24 UNF	1/8-27 NPT	45°	3/16"	NPT	3/16"	1/2"	BQ48
3/8-24 UNF	3/8-24 UNF	45°	3/16"	12mm	3/16"	9/16"	BQ156
3/8-24 UNF	7/16-20 UNF	45°	3/16"	12mm	3/16"	9/16"	BQ47
3/8-24 UNF	7/16-24 UNS	45°	3/16"	12mm	3/16"	9/16"	BQ46
3/8-24 UNF	1/2-20 UNF	45°	3/16"	12mm	3/16"	5/8"	BQ9300
3/8-24 UNF	1/2-20 UNF	45°	3/16"	12mm	5/16"	5/8"	BQ120
3/8-24 UNF	9/16-18 UNF	45°	3/16"	12mm	3/16"	11/16"	BQ124
3/8-24 UNF	9/16-18 UNF	Bubble	3/16"	12mm	3/16"	11/16"	BQ262
3/8-24 UNF	9/16-20 UNS	45°	3/16"	12mm	3/16"	11/16"	BQ121
3/8-24 UNF	M10×1	45°	3/16"	12.6mm	3/16"	9/16"	BQ49
3/8-24 UNF	M10×1	Bubble	3/16"	12mm	3/16"	13mm	BQ125
3/8-24 UNF	M12×1	45°	3/16"	12mm	3/16"	16mm	BQ383
7/16-24 UNS	3/8-24 UNF	45°	1/4"	11.2mm	3/16"	9/16"	BQ45
7/16-24 UNS	1/2-20 UNF	45°	1/4"	12mm	3/16"	5/8"	BQ9301
7/16-24 UNS	1/2-20 UNF	45°	1/4"	12mm	5/16"	5/8"	BQ122
7/16-24 UNS	9/16-18 UNF	45°	1/4"	12mm	3/16"	11/16"	BQ123
1/2-20 UNF	3/8-24 UNF	45°	3/16"	12mm	3/16"	11/16"	BQ9304
1/2-20 UNF	3/8-24 UNF	45°	5/16"	11.2mm	3/16"	16mm	BQ260
1/2-20 UNF	7/16-24 UNS	45°	5/16"	12mm	1/4"	5/8"	BQ127
9/16-18 UNF	3/8-24 UNF	45°	5/16"	11.2mm	3/16"	11/16"	BQ261
M10×1	3/8-24 UNF	45°	3/16"	11.2mm	3/16"	1/2"	BQ50
M10×1	M10×1	DIN	3/16"	13mm	3/16"	16mm	BQ40
M10×1	M10×1.25	45°	3/16"	12mm	3/16"	13mm	BQ42
M10×1	M12×1	45°	3/16"	12mm	3/16"	16mm	BQ43
M10×1.25	M10×1	45°	3/16"	12.6mm	3/16"	13mm	BQ41
M10×1.5	M10×1	45°	3/16"	13mm	3/16"	15mm	BQ9305
M11×1.25	3/8-24 UNF	45°	3/16"	11.2mm	3/16"	1/2"	BQ9307
M12×1	1/8-27 NPT	DIN	1/4"	NPT	3/16"	16mm	BQ246
M12×1.5	1/8-27 NPT	45°	3/16"	NPT	3/16"	14mm	BQ379
M12×1	M10×1	45°	1/4"	12.6mm	3/16"	16mm	BQ44
M14×1.5	1/8-27 NPT	45°	3/16"	NPT	3/16"	17mm	BQ380

/// Male-Female Adapters Assortment Kit, BQ7004, is on page 25.

HARDWARE CONTINUED

Male-Male

JIC Thread	2nd Stud Thread	2nd Stud Length	Hex	Overall Length	Part Number
3/8-24 UNF (-03 JIC)	3/8-24 UNF	16mm	1/2"	34.2mm	BQ135
3/8-24 UNF (-03 JIC)	1/4-28 UNF	16mm	1/2"	36mm	BQ132
3/8-24 UNF (-03 JIC)	1/2-20 UNF	13mm	1/2"	33mm	BQ168
3/8-24 UNF (-03 JIC)	9/16-18 UNF	15mm	9/16"	33mm	BQ197
3/8-24 UNF (-03 JIC)	M10×1	16mm	1/2"	34.2mm	BQ129
3/8-24 UNF (-03 JIC)	M10×1.25	16mm	1/2"	36mm	BQ128
3/8-24 UNF (-03 JIC)	M10×1.5	16mm	1/2"	60mm	BQ130
7/16-20 UNF (-04 JIC)	3/8-24 UNF	16mm	1/2"	37.1mm	BQ131
7/16-20 UNF (-04 JIC)	7/16-24 UNS	16mm	9/16"	36mm	BQ134
7/16-20 UNF (-04 JIC)	M10×1	11.6mm	1/2"	31.6mm	BQ176
7/16-20 UNF (-04 JIC)	M12×1	16mm	14mm	36mm	BQ144
7/16-20 UNF (-04 JIC)	M12×1.25	16mm	14mm	37mm	BQ149

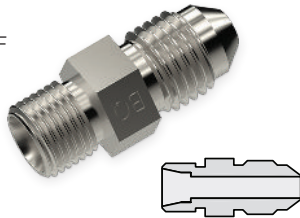


/// Male-Male Adapters Assortment Kit, BQ7010, is on page 26.

-04 JIC to M10×1

BQ145

JIC thread	7/16-20 UNF
Dash size	-04 JIC
2nd thread	M10×1
Hex	12mm
Stud length	9mm
Overall length	29mm



Designed to be used with ISO 24° cone connector.

-03 JIC to 1/8-28 BSPP

BQ157

JIC thread	3/8-24 UNF
Dash size	-03 JIC
2nd thread	1/8-28 BSPP
Hex	5/8"
Stud length	6.5mm
Overall length	25.9mm



Designed to be used with bonded washer (dowty seal).

HARDWARE *CONTINUED*

BUMP TUBE ADAPTERS

These adapters are for power steering and fuel systems.

Male to O-ring Pilot

O-ring pilot includes a high-temperature Viton O-ring.

Stud Thread	O-ring Pilot Thread	Hex	Overall Length	Part Number
1/2-20 UNF (-05 JIC)	1/2-20 UNF	9/16"	37.4mm	5MBT-5MJ
9/16-18 UNF (-06 JIC)	11/16-18 UNS	3/4"	41.9mm	7MBT-6MJ
9/16-18 UNF (-06 JIC)	M14 × 1.5	5/8"	38.8mm	14MMBT-6MJ
9/16-18 UNF (-06 JIC)	M16 × 1.5	17mm	38.9mm	16MMBT-6MJ
9/16-18 UNF (-06 JIC)	M18 × 1.5	3/4"	39.4mm	18MMBT-6MJ



Male to O-ring Boss

O-ring boss includes a PTFE crush ring

Stud Thread	O-ring Boss Thread	Hex	Overall Length	Part Number
9/16-18 UNF (-06 JIC)	M16 × 1.5 (Ford type III)	18mm	32.1mm	16MMORB-6MJ



Female to O-ring Pilot

O-ring pilot includes a high-temperature Viton O-ring.

Port Thread	O-ring Pilot Thread	Hex	Overall Length	Part Number
5/8-18 UNF inverted	M16 × 1.5	3/4"	30.8mm	16MMBT-6FI



/// Bump Tube Adapter Assortment Kit, BQ7003, is on page 25.

TRANSMISSION LINE ADAPTERS

Straight

BQ182

Thread	5/8-18 UNF
Seat type	inverted



90°

BQ183

Thread	5/8-18 UNF
Seat type	inverted



HARDWARE CONTINUED

COPPER WASHERS

Sold in packs of 20.

Bolt Size	Diameter	Thickness	Part Number
3/8"	5/8"	1.5 mm	BQ3858
7/16"	18 mm	1.5 mm	BQ1118
1/2"	20 mm	2 mm	BQ1320
9/16"	21 mm	2 mm	BQ1421
8 mm	13 mm	1.3 mm	BQ813
10 mm	16 mm	1.5 mm	BQ1016
12 mm	18 mm	1.5 mm	BQ1218
15 mm	22 mm	2 mm	BQ1522
16 mm	24 mm	2 mm	BQ1624



Copper Seat Seal
(Flare Gasket)
BQ244
pack of 10



/// Copper Washer Assortment Kit, BQ7000, is on page 25.

BANJO BOLTS

Standard

Thread	Stud Length	Hex	Part Number	Washer
3/8-24 UNF	25 mm	11 mm	BQ8093	BQ3858
7/16-20 UNF	23.8 mm	1/2"	BQ8089	BQ1118
7/16-20 UNF	27 mm	11 mm	BQ8096	BQ1118
7/16-24 UNS	26.5 mm	1/2"	BQ8090	BQ1118
1/2-20 UNF	31 mm	9/16"	BQ8097	BQ1320
M8×1	17 mm	10 mm	BQ8076	BQ813
M8×1.25	16 mm	10 mm	BQ8077	BQ813
M10×1	22 mm	11 mm	BQ8095	BQ1016
M10×1	26 mm	11 mm	BQ8094	BQ1016
M10×1.25	22 mm	11 mm	BQ8099	BQ1016
M10×1.5	20 mm	11 mm	BQ8075	BQ1016
M10×1.5	23 mm	11 mm	BQ8086	BQ1016
M10×1.5	23 mm	11 mm	BQ8086SS	BQ1016
M10×1.5	27 mm	11 mm	BQ8088	BQ1016
M11×1.25	23 mm	11 mm	BQ8087	BQ1118
M12×1	21.3 mm	13 mm	BQ8098	BQ1218
M12×1.25	25 mm	13 mm	BQ8078	BQ1218
M12×1.5	25 mm	13 mm	BQ8092	BQ1218



Double

Thread	Stud Length	Hex	Part Number	Washer
3/8-24 UNF	34.5 mm	7/16"	BQ8085	BQ3858
M10×1	34.5 mm	11 mm	BQ8083	BQ1016
M10×1.25	34.5 mm	11 mm	BQ8084	BQ1016



/// Banjo Bolt Assortment Kit, BQ7007, is on page 26.

HARDWARE CONTINUED

BANJO ADAPTERS

Block Block banjo adapter ports have an inverted seat.

Thread	Hole Size	Thickness	Width	Part Number
3/8-24 UNF	10.2mm	1/2"	17 mm	BQ60
7/16-24 UNS	11.2mm	14mm	18 mm	BQ62
1/2-20 UNF	12.9mm	16mm	20 mm	BQ63
M10×1	10.2mm	13mm	17 mm	BQ61



Round Round banjo adapters have a JIC stud.

Thread	Dash Size	Hole Size	Thickness	Width	Overall Length	Part Number
3/8-24 UNF	-03 JIC	10mm	10mm	17 mm	42mm	BQ150 <i>tube</i>
3/8-24 UNF	-03 JIC	10mm	10mm	17 mm	19.6mm	BQ151
3/8-24 UNF (2)	-03 JIC	10mm	10mm	17 mm	39.2mm	BQ152 <i>union</i>
7/16-20 UNF	-04 JIC	10mm	10mm	18 mm	42mm	BQ155 <i>tube</i>
1/2-20 UNF	-05 JIC	14mm	14mm	24 mm	26mm	BQ271
1/2-20 UNF	-05 JIC	14mm	14mm	24 mm	44mm	BQ392 <i>tube</i>
9/16-18 UNF	-06 JIC	16mm	16mm	28 mm	44mm	BQ393 <i>tube</i>



/// Banjo Adapters Assortment Kit, BQ7001, page 25.

BRAZE-ON BANJO HEADS

Hole Size	Thickness	Width	Tube Size	Overall Length	Part Number
7/16"	10mm	19mm	3/16"	27.5mm	BQ225
10.2mm	8mm	17mm	3/16"	25.5mm	BQ223
10.2mm	10mm	18mm	3/16"	26mm	BQ224
12.2mm	12mm	22mm	10mm	27mm	BQ178
14.2mm	14mm	24mm	10mm	28mm	BQ179



/// Brazing rods are on page 14.

HARDWARE CONTINUED

BLEED SCREWS



Thread	Stud Length	Hex	Part Number	Cap
1/4-28 UNF	15.3mm	7 mm	BQ4439	BQ315
5/16-24 UNF	17.5mm	5/16"	BQ4438	BQ316
3/8-24 UNF	20.8mm	3/8"	BQ4433	BQ315
7/16-20 UNF	20.5mm	7/16"	BQ4445	BQ316
7/16-24 UNS	24.5mm	7/16"	BQ4444	BQ316
M7×1	12.5mm	8mm	BQ4436	BQ315
M7×1	21.5mm	7mm	BQ4441	BQ315
M8×1	17.5mm	8mm	BQ4443	BQ316
M8×1.25	22.1mm	8mm	BQ4442	BQ316
M10×1	19.5mm	10mm	BQ4435	BQ315
M10×1	24.1mm	10mm	BQ4434	BQ315
M10×1.25	20.4mm	10mm	BQ4446	BQ316
M10×1.5	17.9mm	10mm	BQ4440	BQ316

Bleed Screw Caps



Part Number	Size
BQ315	Small
BQ316	Large

Bleed Screw Repair Kit BQ181



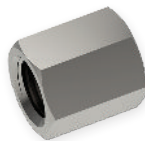
Rescue your brake component that has a stripped or broken bleed screw: simply drill and tap to 1/8-27 NPT.

/// Bleeder Buster Kit, BQ2200, is on page 11.

/// Bleed Screws Assortment Kit, BQ7014, is on page 27.

BRAKE HOSE CAPS & PLUGS

Caps



Thread	Hex	Part Number
3/8-24 UNF	1/2"	BQ160
7/16-20 UNF	9/16"	BQ162
7/16-24 UNS	9/16"	BQ161
1/2-20 UNF	5/8"	BQ163
M10×1	13mm	BQ164
M10×1.25	13mm	BQ165
M12×1	16mm	BQ166
M12×1.5	16mm	BQ167

Plugs



Thread	Fits	Hex	Part Number
1/8-27 NPT	-	7/16"	BQ508
3/8-24 UNF	inverted seat	3/8"	BQ503
7/16-24 UNS	inverted seat	7/16"	BQ504
M10×1	drill-point seat	11 mm	BQ506
M10×1	inverted seat	11 mm	BQ502
M12×1	drill-point seat	13 mm	BQ507
M12×1	inverted seat	13 mm	BQ505

/// Brake Hose Plugs & Caps Assortment Kit, BQ7015, is on page 27.

HARDWARE CONTINUED

ASSORTMENT KITS

Assortment kits contain a selection of hard-to-find parts and problem-solvers.
Call about custom branding.

Copper Washers

BQ7000

Part Number	Qty
BQ1016	20
BQ1118	20
BQ1218	20
BQ1320	20
BQ1421	10
BQ1522	10
BQ1624	10
BQ3858	20



/// Copper washer listing is on page 22.

Bump Tube Adapters

BQ7003

Part Number	Qty
5MBT-5MJ	4
7MBT-6MJ	4
14MMBT-6MJ	4
16MMBT-6FI	4
16MMBT-6MJ	4
18MMBT-6MJ	4



/// Bump tube adapter listing is on page 21.

Banjo Adapters

BQ7001

Part Number	Qty
BQ60	4
BQ61	4
BQ62	4
BQ63	4
BQ150	4
BQ151	4



/// Banjo adapter listing is on page 23.

Male-Female Adapters

BQ7004

Part Number	Qty
BQ40	2
BQ41	4
BQ42	4
BQ43	4
BQ44	4
BQ45	4
BQ46	4
BQ47	4
BQ48	4
BQ49	4
BQ50	4
BQ120	4
BQ121	2
BQ122	4
BQ123	2
BQ124	2
BQ125	4
BQ156	4

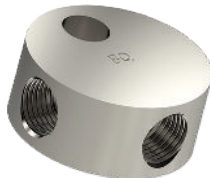


/// Male-Female adapter listing is on page 19.

3-Way Tube Tees

BQ7002

Part Number	Qty
BQ56A	2
BQ90A	2
BQ91A	2
BQ92A	2
BQ93A	2
BQ95A	2



/// Tee listing is on page 17.

HARDWARE CONTINUED

Metric Tube Nuts

BQ7005

Part Number	Qty
BQ72	4
BQ4511	10
BQ4512	6
BQ4513	6
BQ9174	4
BQ9175	4
BQ9178	4
BQ9179	4
BQ9180	4
BQ9182	4
BQ9183	4
BQ9188	4
BQ9191	4
BQ9192	4
BQ9193	4



/// Metric tube nut listing is on page 12.

Imperial Tube Nuts

BQ7006

Part Number	Qty
BQ57	4
BQ2577	10
BQ2578	6
BQ4276	4
BQ4277	4
BQ4285	4
BQ5555	10
BQ5842	10
BQ6118	6
BQ9176	4
BQ9177	4
BQ9184	4
BQ9185	4
BQ9186	4
BQ9187	4



/// Imperial tube nut listing is on page 12.

Banjo Bolts

BQ7007

Part Number	Qty
BQ8086	4
BQ8087	4
BQ8088	4
BQ8089	4
BQ8090	4
BQ8092	4
BQ8093	6
BQ8095	6
BQ8096	4
BQ8097	4
BQ8098	4
BQ8099	4



/// Banjo bolt listing is on page 22.

Female Unions

BQ7009

Part Number	Qty
BQ110	4
BQ111	4
BQ114	4
BQ115	4
BQ116	4
BQ117	4



/// Female union listing is on page 15.

Male-Male Adapters

BQ7010

Part Number	Qty
BQ129	4
BQ130	4
BQ131	4
BQ134	4
BQ135	4
BQ144	4



/// Male-Male adapter listing is on page 20.

HARDWARE *CONTINUED*

Bleed Screws

BQ7014

Part Number	Qty
BQ315	10
BQ316	10
BQ4433	4
BQ4434	4
BQ4435	4
BQ4438	4
BQ4439	4
BQ4440	4
BQ4441	4
BQ4442	4
BQ4443	4
BQ4444	4
BQ4445	4
BQ4446	4



/// Bleed screw listing is on page 24.

Brake Hose Plugs & Caps

BQ7015

Part Number	Qty
BQ160	2
BQ161	2
BQ163	2
BQ164	2
BQ165	2
BQ166	2
BQ167	2
BQ502	2
BQ503	2
BQ504	2
BQ505	2
BQ506	2
BQ507	2
BQ508	2
BQ1020R	1



BQ1020R

/// Plug and cap listing is on page 24.

FUEL

Fuel Connectors

Quick Connects	29
Quick Connect Tubes	29
FuelFlex Connectors	29
FuelFlex Reducers	29
FuelFlex to Rubber Hose	29
Thread Connectors	30

Fuel Fittings

FuelFlex Unions	30
Bump Tube Nuts	30
Male-Female Adapters	30
Compression Fittings	30

Fuel Accessories

FuelFlex Tubing	31
Fuel Pressure Repair Kit	31
360° Tube Clamps	31
Tube Cutter	31
Spring Mandrels	31
Tube Support Clamps	31
360° Tube Clamp Pliers	31
Heat Shield	31

Fuel Line Kit

Professional Fuel Line Kit	32
----------------------------	----

FUEL CONNECTORS

QUICK CONNECTS

Thumb-release convenience with no special tools required.

Straight

Female	Male	Part Number
1/4"	5/16"	FL08-4-5
5/16"	5/16"	FL08-5-5
5/16"	3/8"	FL08-5-6
3/8"	5/16"	FL08-6-5
3/8"	3/8"	FL08-6-6

90°

Female	Male	Part Number
5/16"	5/16"	FL09-5-5
5/16"	3/8"	FL09-5-6
3/8"	5/16"	FL09-6-5
3/8"	3/8"	FL09-6-6



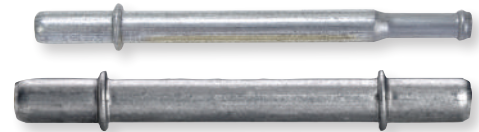
QUICK CONNECT TUBES

Description

- 1/4" quick connect to 8mm FuelFlex - straight
- 5/16" quick connect to 8mm FuelFlex - straight
- 3/8" quick connect to 3/8" quick connect - straight
- 3/8" quick connect to 10mm FuelFlex - straight

Part Number

- FL05-4
- FL03-5
- FL04-6
- FL03-6



FUELFLEX CONNECTORS

Description

- 8mm FuelFlex to 8mm FuelFlex - 90°
- 10mm FuelFlex to 10mm FuelFlex - 90°

Part Number

- FL20-5
- FL20-6



FUELFLEX REDUCERS

Description

- 8mm FuelFlex to 1/4" FuelFlex
- 10mm FuelFlex to 8mm FuelFlex

Part Number

- FL06-5-4
- FL06-6-5



FUELFLEX TO RUBBER HOSE

Description

- 8mm FuelFlex to 5/16" rubber hose
- 10mm FuelFlex to 3/8" rubber hose

Part Number

- FL02-5
- FL02-6

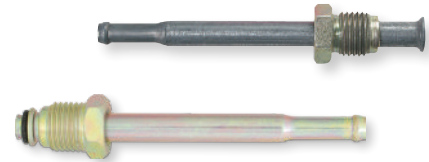


FUEL CONNECTORS CONTINUED

THREAD CONNECTORS

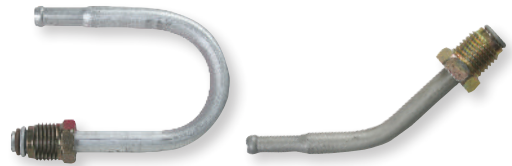
Straight

Tube End	End Form	Thread	Length	Part Number
5/16" rubber hose	bump	M14×1.5	230 mm	FL07-5
3/8" rubber hose	bump	M16×1.5	230 mm	FL07-6
8mm FuelFlex	double flare	M14×1.5	90 mm	FL12-14MM
8mm FuelFlex	bump	M14×1.5	155 mm	FL13-5
8mm FuelFlex	bump	M14×1.5	100 mm	FL14-5
10mm FuelFlex	bump	M16×1.5	155 mm	FL13-6
10mm FuelFlex	bump	M16×1.5	100 mm	FL14-6



Bent

Tube End	End Form	Thread	Bend	Part Number
8mm FuelFlex	double flare	M14×1.5	30°	FL11-14MM
10mm FuelFlex	bump	M16×1.5	180°	FL15



FUEL FITTINGS

FUELFLEX UNIONS

Size	Part Number
8mm	FL01-5
10mm	FL01-6



MALE-FEMALE ADAPTERS

Male	Female	Seat	Part Number
8mm FuelFlex	M14×1.5	bump	FL10-5S <i>steel</i>
10mm FuelFlex	M16×1.5	bump	FL10-6S <i>steel</i>
8mm FuelFlex	M14×1.5	inverted	FL10-14MM <i>brass</i>



BUMP TUBE NUTS

Size	Part Number
M16×1.5 – 3/8"	BQ9148
M14×1.5 – 5/16"	BQ9149



COMPRESSION FITTINGS

Description	Part Number
8mm FuelFlex — 5/16" metal tube	FL36 <i>brass</i>
8mm FuelFlex — 8mm FuelFlex	FL37 <i>brass</i>
10mm FuelFlex — 3/8" metal tube	FL38 <i>brass</i>
10mm FuelFlex — 10mm FuelFlex	FL39 <i>brass</i>



FUEL ACCESSORIES

FUELFLEX TUBING

Size	Coil Length	Part Number
8mm (5/16")	25ft	T8-FF
10mm (3/8")	25ft	T10-FF



SPRING MANDRELS

Size	Part Number
8mm (5/16")	BQ318
10mm (3/8")	BQ319



FUEL PRESSURE REPAIR KIT

Size	Part Number
8mm (5/16")	FL21
10mm (3/8")	FL22



TUBE SUPPORT CLAMPS

Size	Part Number
8mm (5/16")	FL35
10mm (3/8")	FL34



360° TUBE CLAMPS

Size	Part Number
8mm (5/16")	FL25
10mm (3/8")	FL26



360° TUBE CLAMP PLIERS BQ412



TUBE CUTTER

BQ-01



HEAT SHIELD

BQ313-SV

Available in 5 ft sections.

Maximum OD is 1/2".



FUEL LINE KIT

PROFESSIONAL FUEL LINE KIT

BQFL4500

The Professional Fuel Line Kit comes with dozens of components and fittings, from quick connects and adapters to pliers, clamps, and heat shields.

With over 180 pieces and 50 feet of FuelFlex tubing, this kit is a complete fuel line solution for almost any vehicle.



Part Number	Qty	Part Number	Qty	Part Number	Qty
TUBING					
T8-FF	25 ft	FUELFLEX REDUCERS		COMPRESSION FITTINGS	
T10-FF	25 ft	FL06-6-5	2	FL36	2
QUICK CONNECTS					
FL08-4-5	2	FUELFLEX ADAPTERS		FL37	2
FL08-5-5	2	FL02-5	2	FL38	2
FL08-5-6	2	FL02-6	2	FL39	2
FL08-6-5	2	THEADED CONNECTORS			
FL08-6-6	2	FL07-5	2	BUMP TUBE NUTS	
FL09-5-5	2	FL07-6	2	BQ9148	4
FL09-5-6	2	FL11-14MM	2	BQ9149	4
FL09-6-5	2	FL12-14MM	2	SCREWS AND CLAMPS	
FL09-6-6	2	FL13-5	2	BQ811	20
QUICK CONNECTOR TUBES					
FL03-5	2	FL13-6	2	FL25	20
FL03-6	2	FL14-5	2	FL26	20
FL04-6	2	FL14-6	2	FL34	20
FL05-4	2	FL15	1	FL35	20
FUELFLEX CONNECTORS					
FL20-5	2	FUELFLEX UNIONS			
FL20-6	2	FL01-5	2	TOOLS	
		FL01-6	2	BQ318	1
		MALE-FEMALE ADAPTERS			
		FL10-5S	1	BQ319	1
		FL10-6S	1	BQ-01	1
		FL10-14MM	1	BQ412	1
				TUBE PROTECTION	
				BQ313-SV	5ft



BrakeQuip LLC
865.251.9193
sales@brakequip.com